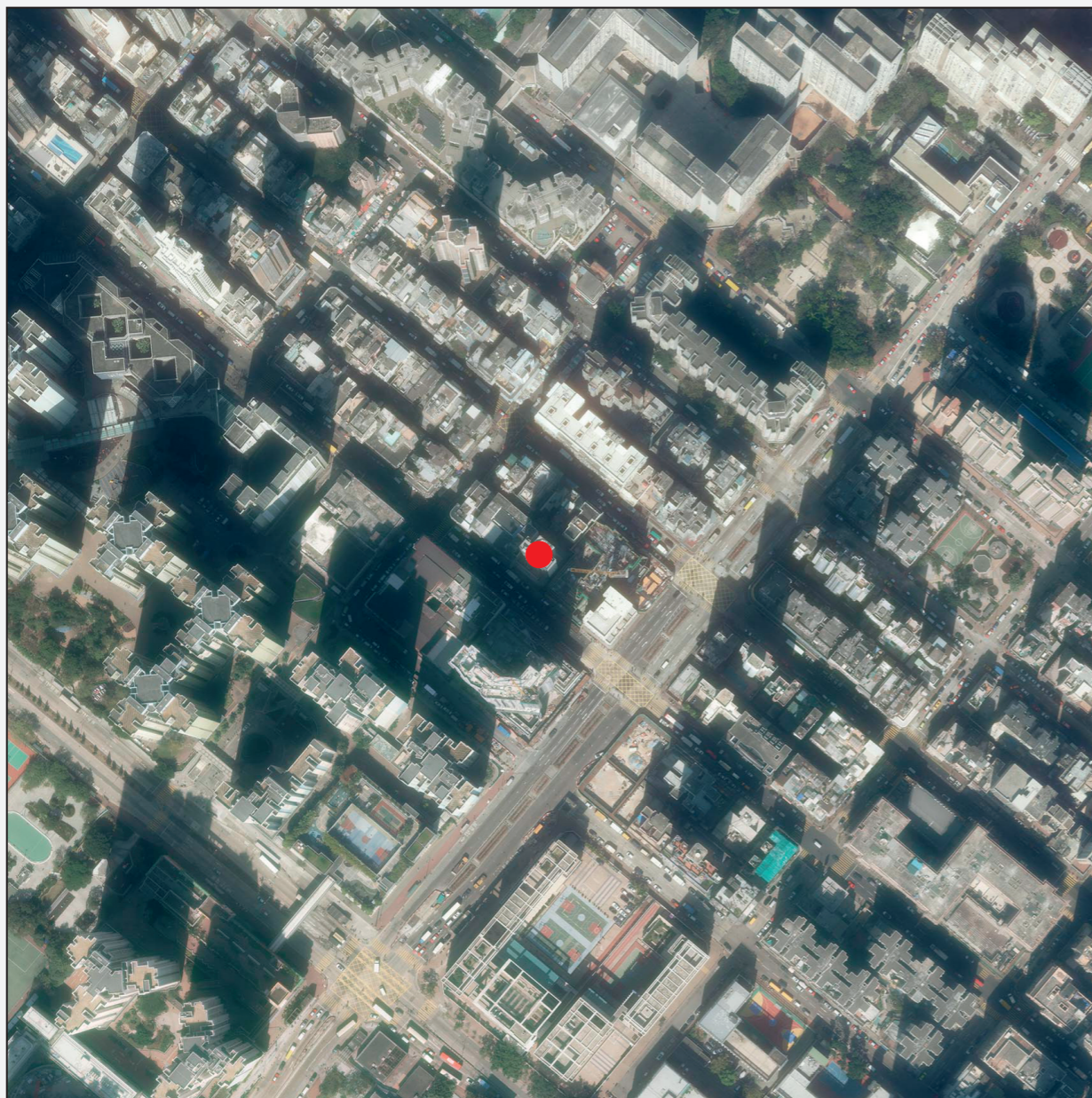


# 發展項目的鳥瞰照片

## Aerial photograph of the development



摘錄自地政總署測繪處在6,900呎的飛行高度拍攝之鳥瞰照片，照片編號為E139796C，飛行日期：2021年2月5日。

Adopted from part of the aerial photograph taken by the Survey and Mapping Office of the Lands Department at a flying height of 6,900 feet, Photo No. E139796C, dated 5 February 2021.

香港特別行政區政府地政總署測繪處©版權所有，未經許可，不得翻印。  
Survey and Mapping Office, Lands Department, The Government of HKSAR © Copyright reserved — reproduction by permission only.

備註：1. 發展項目的鳥瞰照片之副本可於售樓處開放時間內免費查閱。  
2. 由於發展項目的邊界不規則的技術原因，此鳥瞰照片所顯示的範圍可能超過《一手住宅物業銷售條例》所規定的範圍。

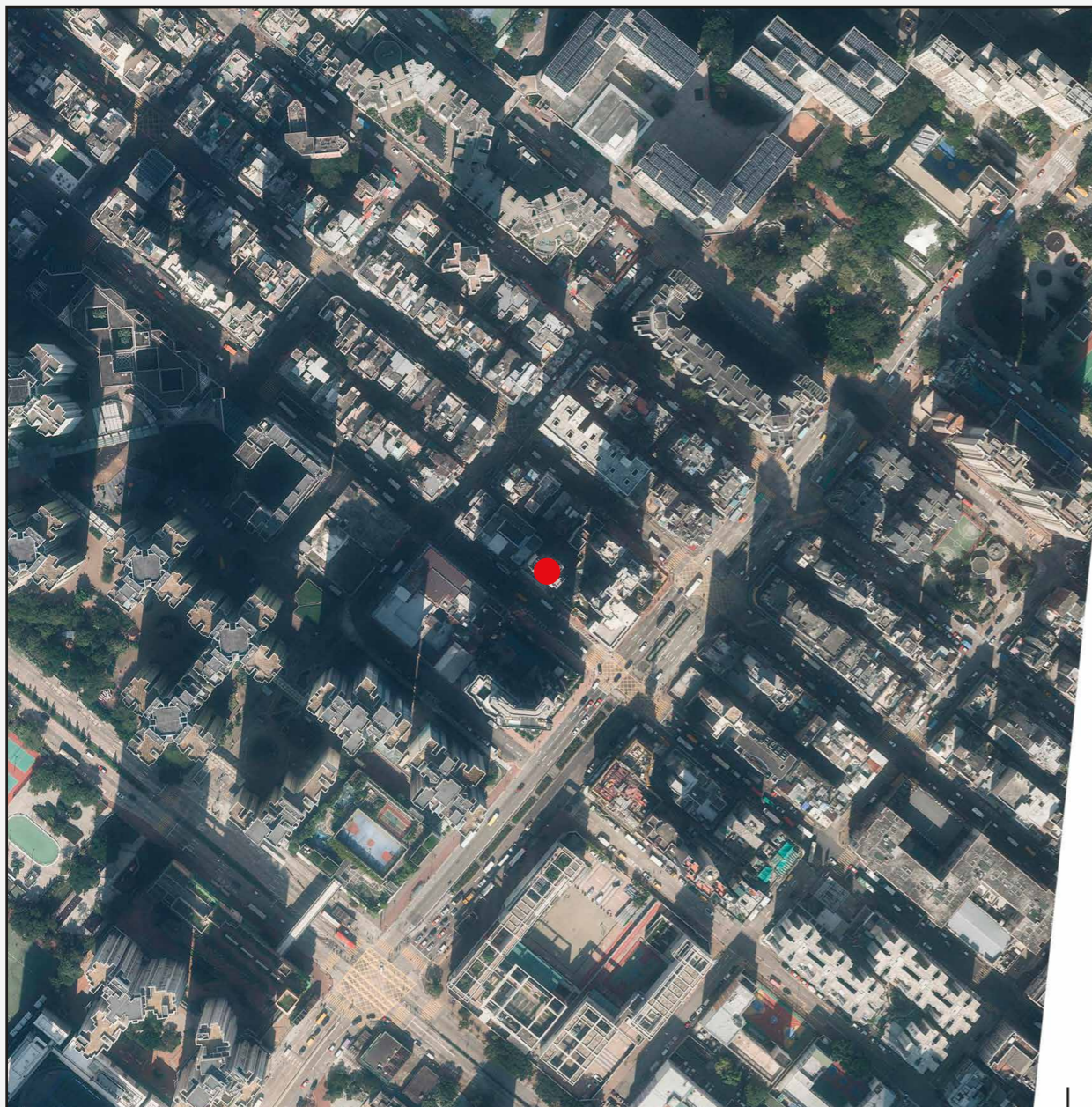
Note: 1. Copy of the aerial photograph of the Development is available for free inspection at the sales office during opening hours.  
2. The aerial photograph may show more than the area required under the Residential Properties (First-hand Sales) Ordinance due to the technical reason that the boundary of the Development is irregular.



● 發展項目位置  
Location of the Development

# 發展項目的鳥瞰照片

## Aerial photograph of the development



有關鳥瞰照片並不覆蓋本空白範圍

This blank area falls outside the coverage of the relevant aerial photograph



發展項目位置  
Location of the Development

摘錄自地政總署測繪處在6,900呎的飛行高度拍攝之鳥瞰照片，照片編號為E166784C，飛行日期：2022年12月8日。

Adopted from part of the aerial photograph taken by the Survey and Mapping Office of the Lands Department at a flying height of 6,900 feet, Photo No. E166784C, dated 8 December 2022.

香港特別行政區政府地政總署測繪處©版權所有，未經許可，不得翻印。  
Survey and Mapping Office, Lands Department, The Government of HKSAR © Copyright reserved — reproduction by permission only.

備註：1. 發展項目的鳥瞰照片之副本可於售樓處開放時間內免費查閱。  
2. 由於發展項目的邊界不規則的技術原因，此鳥瞰照片所顯示的範圍可能超過《一手住宅物業銷售條例》所規定的範圍。

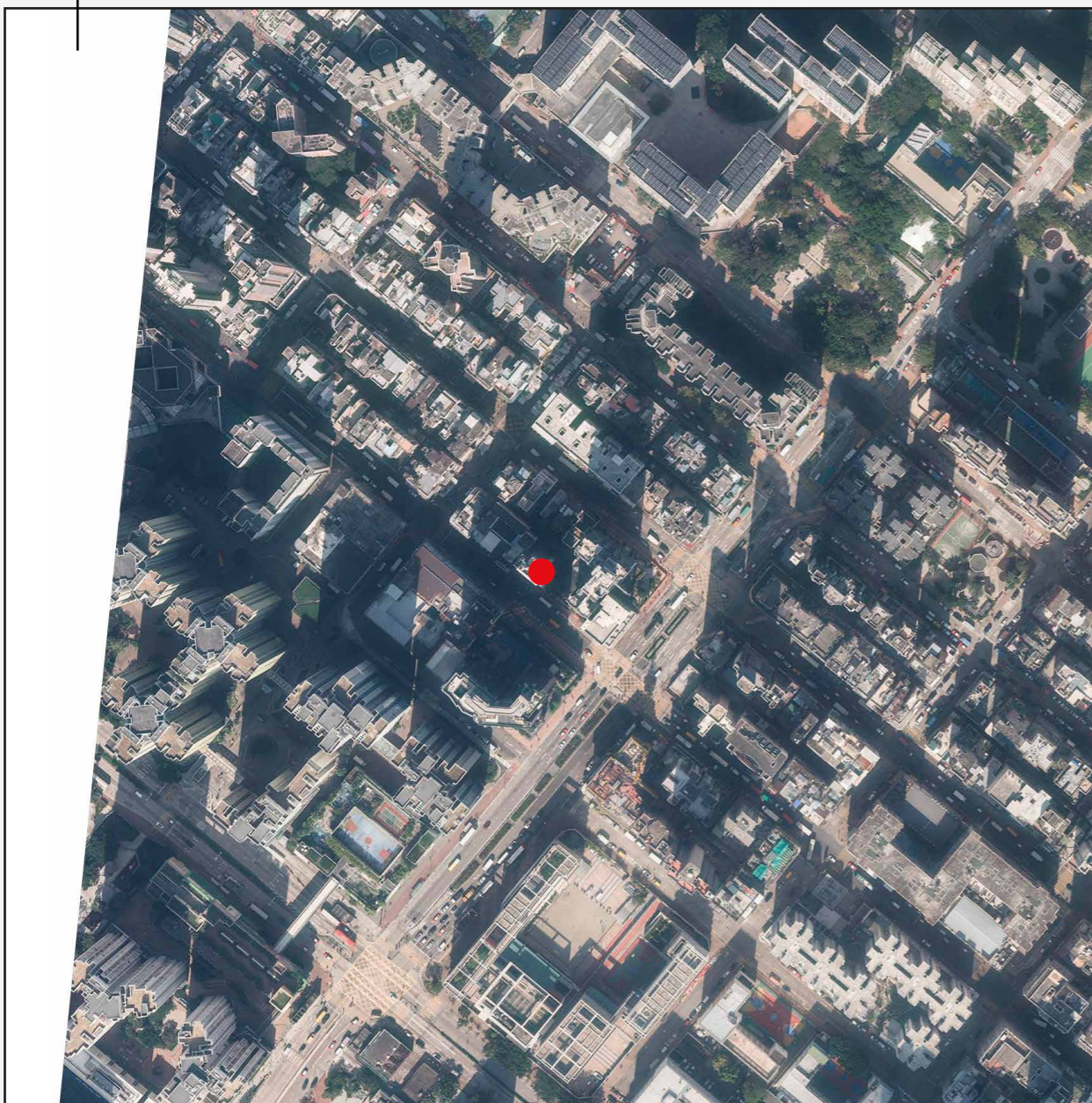
Note: 1. Copy of the photograph of the Development is available for free inspection at the sales office during opening hours.  
2. The aerial photograph may show more than the area required under the Residential Properties (First-hand Sales) Ordinance due to the technical reason that the boundary of the Development is irregular.

# 發展項目的鳥瞰照片

## Aerial photograph of the development

有關鳥瞰照片並不覆蓋本空白範圍

This blank area falls outside the coverage of the relevant aerial photograph



摘錄自地政總署測繪處在6,900呎的飛行高度拍攝之鳥瞰照片，照片編號為E166783C，飛行日期：2022年12月8日。

Adopted from part of the aerial photograph taken by the Survey and Mapping Office of the Lands Department at a flying height of 6,900 feet, Photo No. E166783C, dated 8 December 2022.

香港特別行政區政府地政總署測繪處©版權所有，未經許可，不得翻印。  
Survey and Mapping Office, Lands Department, The Government of HKSAR © Copyright reserved — reproduction by permission only.

備註：1. 發展項目的鳥瞰照片之副本可於售樓處開放時間內免費查閱。  
2. 由於發展項目的邊界不規則的技術原因，此鳥瞰照片所顯示的範圍可能超過《一手住宅物業銷售條例》所規定的範圍。

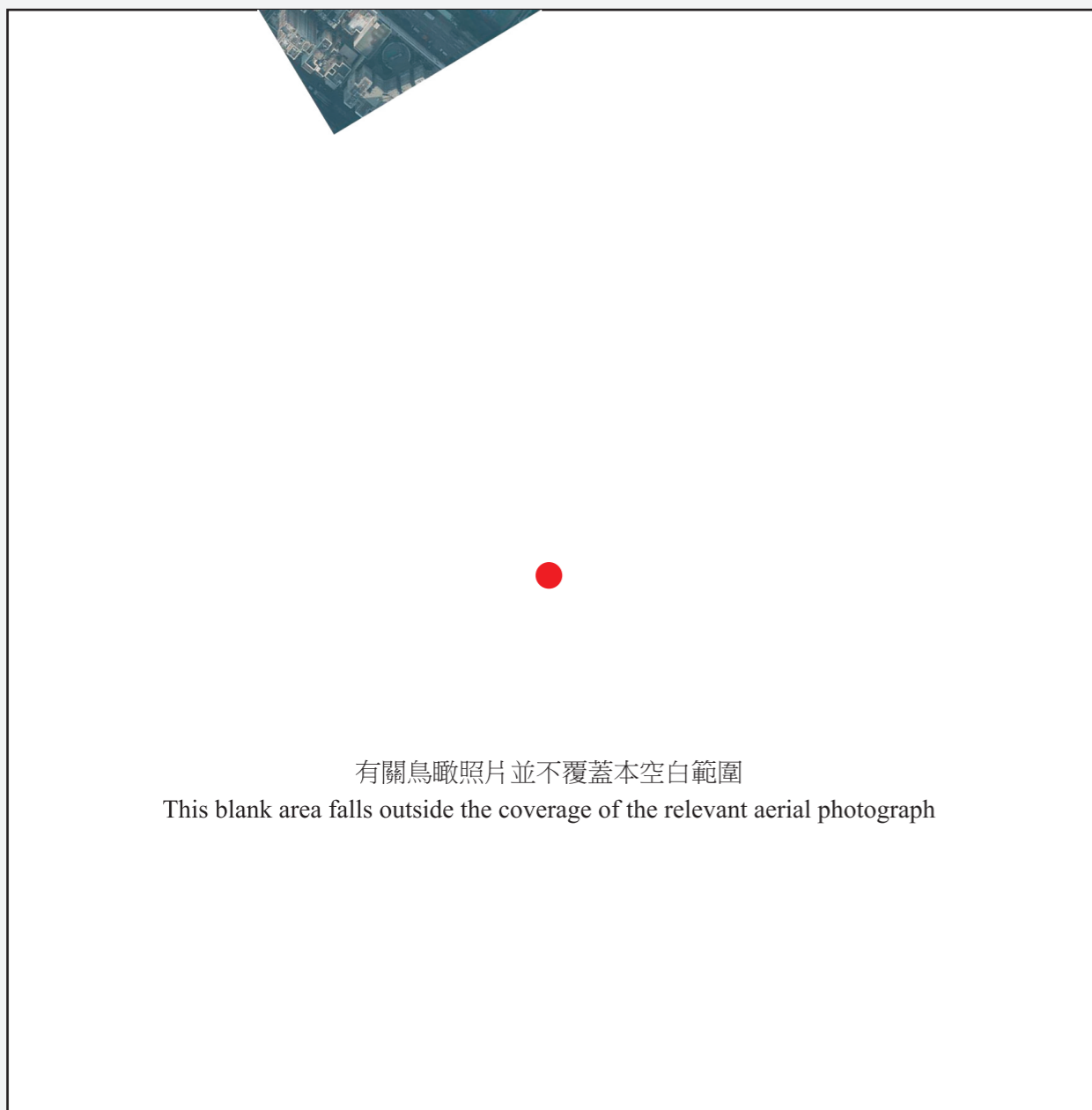
Note: 1. Copy of the aerial photograph of the Development is available for free inspection at the sales office during opening hours.  
2. The aerial photograph may show more than the area required under the Residential Properties (First-hand Sales) Ordinance due to the technical reason that the boundary of the Development is irregular.



● 發展項目位置  
Location of the Development

# 發展項目的鳥瞰照片

## Aerial photograph of the development



摘錄自地政總署測繪處在6,900呎的飛行高度拍攝之鳥瞰照片，照片編號為E171951C，飛行日期：2022年12月10日。

Adopted from part of the aerial photograph taken by the Survey and Mapping Office of the Lands Department at a flying height of 6,900 feet, Photo No. E171951C, dated 10 December 2022.

香港特別行政區政府地政總署測繪處©版權所有，未經許可，不得翻印。  
Survey and Mapping Office, Lands Department, The Government of HKSAR © Copyright reserved — reproduction by permission only.

備註：1. 發展項目的鳥瞰照片之副本可於售樓處開放時間內免費查閱。  
2. 由於發展項目的邊界不規則的技術原因，此鳥瞰照片所顯示的範圍可能超過《一手住宅物業銷售條例》所規定的範圍。

Note: 1. Copy of the aerial photograph of the Development is available for free inspection at the sales office during opening hours.  
2. The aerial photograph may show more than the area required under the Residential Properties (First-hand Sales) Ordinance due to the technical reason that the boundary of the Development is irregular.



發展項目位置  
Location of the Development